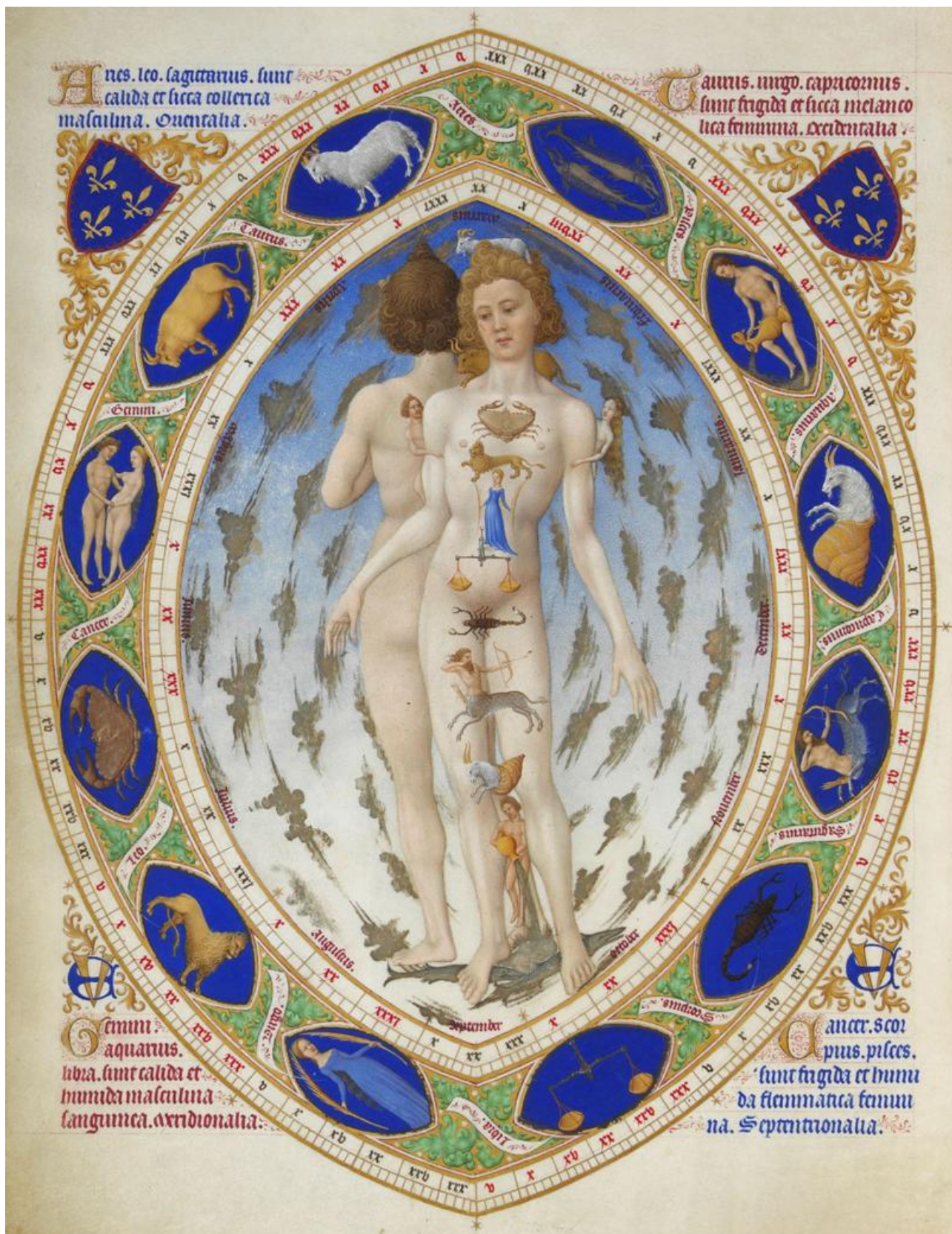


Anatomical man

Anatomical man

This fifteenth-century (1400-1499) illustration shows believed relations between areas of the body and the zodiacal signs. The description plaque reads, "Look at the signs of the zodiac. They correspond to each part of the body, starting with pisces, the feet, and working up their way to the head, with aries, the ram, that has sacred connotations. In each top corner are painted the arms of the Duke of Berry. Each area is complemented by four Latin inscriptions describing the properties of each sign according to the four complexions (hot, cold, wet or dry), the four temperaments (choleric, melancholic, sanguine and phlegmatic) and the four cardinal points: "Aries, Leo and Sagittarius are warm and dry, choleric, masculine, Eastern" in the upper left; "Taurus, Virgo and Capricorn are cold and dry, melancholy, female, Western" in the upper right; "Gemini, Aquarius and Libra are hot and humid, sanguine, masculine, Southern" in the lower left; "Cancer, Scorpio and Pisces are cold and wet, phlegmatic, feminine, Northern" in the lower right. ." (From Wikimedia Commons)



Citation (Chicago Style):

Limbourg brothers. *Anatomical Man*, *Trés Riches Heures du duc de Berry*. 1411-1416. Tempera on vellum. Condé Museum. Wikimedia Commons. https://commons.wikimedia.org/wiki/File:Anatomical_Man.jpg (Accessed December 10, 2018)

Available at:

https://commons.wikimedia.org/wiki/File:Anatomical_Man.jpg

Read the related article:

Poor Richard's Almanack

Usage Statement:

Public Domain

Public Domain is a copyright term that is often used when talking about copyright for creative works. Under U.S. copyright law, individual items that are in the public domain are items that are no longer protected by copyright law. This means that you do not need to request permission to re-use, re-publish or even change a copy of the item. Items enter the public domain under U.S. copyright law for a number of reasons: the original copyright may have expired; the item was created by the U.S. Federal Government or other governmental entity that views the things it creates as in the public domain; the work was never protected by copyright for some other reason related to how it was produced (for example, it was a speech that wasn't written down or recorded); or the work doesn't have enough originality to make it eligible for copyright protection.

Source URL:<https://www.ncpedia.org/media/anatomical-man>