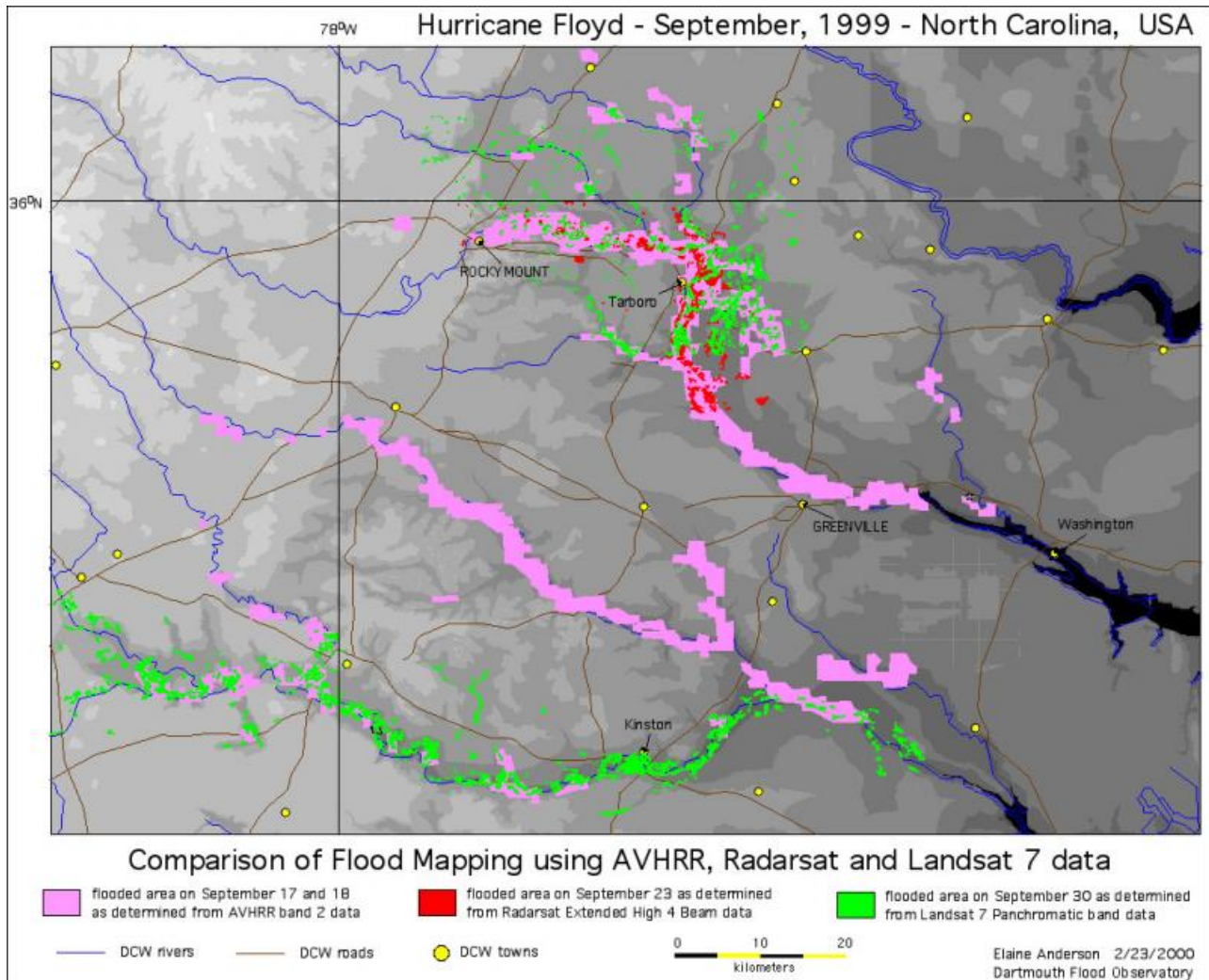


Comparison flood maps

Comparison flood maps

This flood map shows a comparison of the flood data collected by AVHRR (pink pixels), Radarsat (red pixels), and Landsat 7 (green pixels). These colors show areas that were flooded in the wake of Hurricane Floyd. Due to interference from clouds and forest canopies, geographers often get the best insight into a flood when they use data from multiple satellite sensors. Dartmouth Flood Observatory, E. Anderson and R.H. Brakenridge.



Usage Statement:

Creative Commons BY-NC-SA

This item has a Creative Commons license for re-use. This Creative Commons BY-NC-SA license means that you may use, remix, tweak, and build upon the work for non-commercial purposes as long as you credit the original creator and as long as you license your new creation using the same license. For more information about [Creative Commons licensing](https://creativecommons.org/licenses/by-nc-sa/4.0/) ^[1] and a link to the license, see full details at <https://creativecommons.org/licenses/by-nc-sa/4.0/> ^[2].

Source URL: <https://www.ncpedia.org/media/comparison-flood-maps>

Links

[1] <https://creativecommons.org/licenses/> [2] <https://creativecommons.org/licenses/by-nc-sa/4.0/>