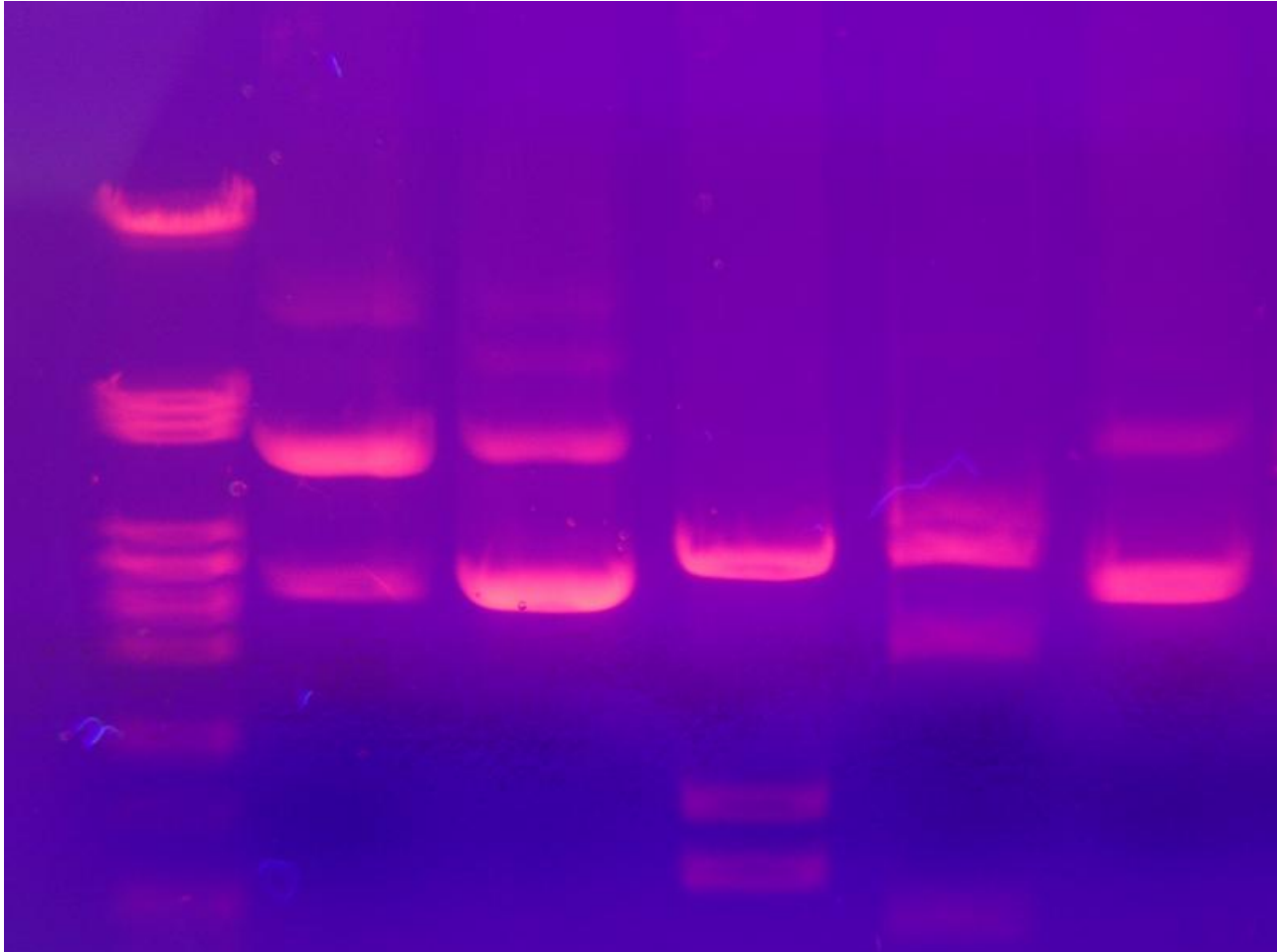


Gel electrophoresis

Gel electrophoresis

Gel electrophoresis showing six DNA tracks. In the first row (left), DNA with known fragment sizes was used as a reference. Different bands indicate different fragment sizes (the smaller, the faster it travels, the lower it is in the image); different intensities indicate different concentrations (the brighter, the more DNA). DNA was made visible using ethidium bromide and ultraviolet light.



Usage Statement:

GNU General Public License

You may share exact copies of this work as long as you credit the original author and provide a link to the [license](#) ^[1]. Changing the item is not allowed under this license.

Source URL: <https://www.ncpedia.org/media/gel-electrophoresis>

Links

[1] <https://www.gnu.org/licenses/gpl-3.0.en.html>