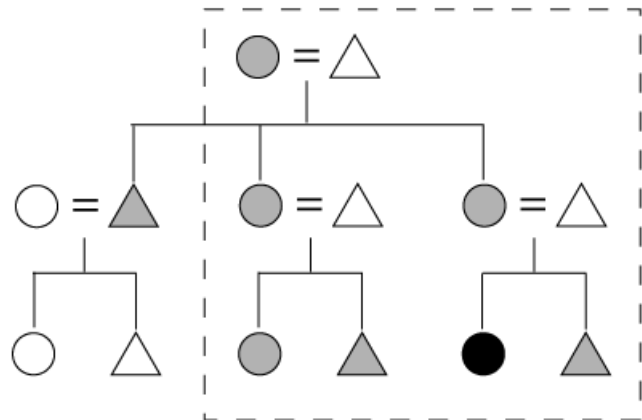
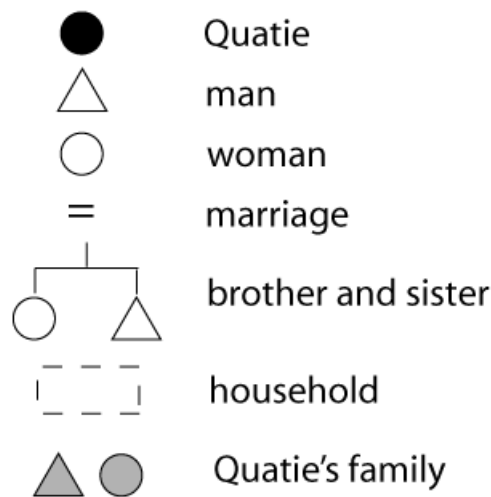


Diagram of matrilineal kinship

Diagram of matrilineal kinship

This diagram shows matrilineal kinship as it existed in Cherokee culture. In the diagram, Quatie is a Cherokee girl; the shaded shapes are people related to her by blood, while the dotted line encloses people who would live together in her household.



Usage Statement:

Creative Commons BY-NC-SA

This item has a Creative Commons license for re-use. This Creative Commons BY-NC-SA license means that you may use, remix, tweak, and build upon the work for non-commercial purposes as long as you credit the original creator and as long as you license your new creation using the same license. For more information about [Creative Commons licensing](#) [1] and a link to the license, see full details at <https://creativecommons.org/licenses/by-nc-sa/4.0/> [2].

Source URL: <https://www.ncpedia.org/media/diagram-matrilineal-kinship>

Links

[1] <https://creativecommons.org/licenses/> [2] <https://creativecommons.org/licenses/by-nc-sa/4.0/>