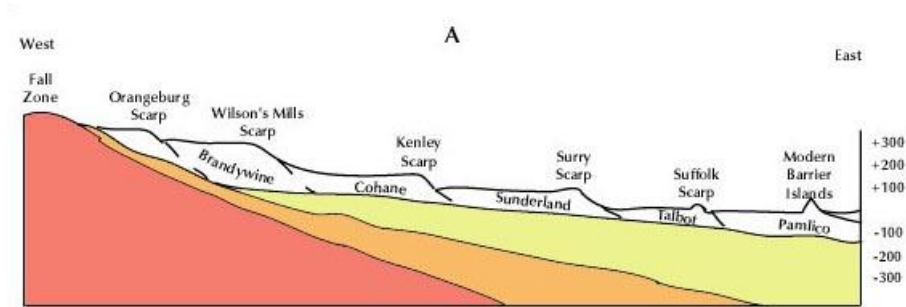


Old shorelines on the southern coastal plain

Old shorelines on the southern coastal plain

Schematic cross-section with names of scarps (shorelines) and sedimentary formations between them. From west to east, shows the Fall Zone, Orangeburg Scarp, Wilson's Mills Scarp, Kenley Scarp, Surry Scarp, Suffolk Scarp, and the modern barrier islands.



Usage Statement:

All Rights Reserved

"All rights reserved" is a traditional copyright term that indicates that the copyright holder reserves for his/her/their own use all of the rights given to copyright owners under U.S. copyright law. Items that are included in NCpedia and/or ANCHOR with this rights statement appear by agreement or permission from the rights holder or the institution that holds the item. Click "Available at" to visit the website for the collection where the item appears for more information about the rights or specific uses allowed. For all other non-specified uses, please contact the copyright holder or item owner.

Source URL: <https://www.ncpedia.org/media/old-shorelines-southern>