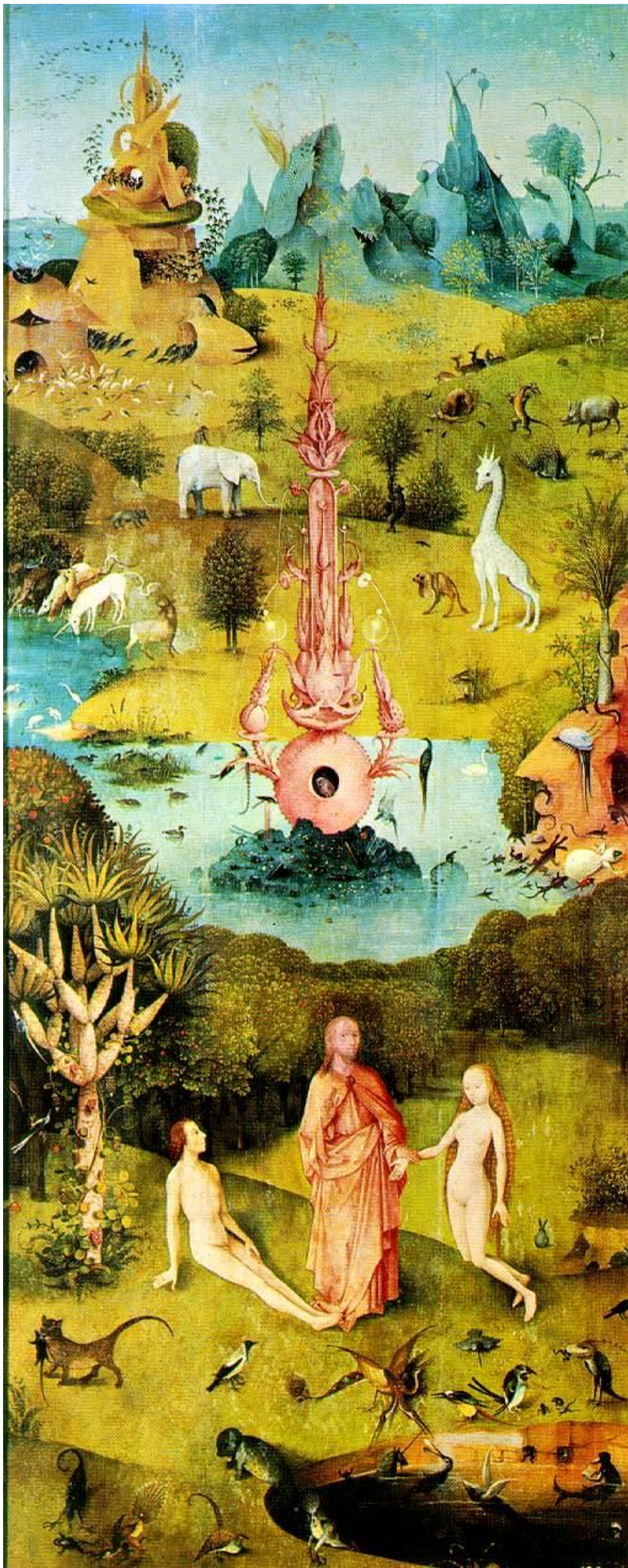


The Garden of Earthly Delights / The Garden of Eden

The Garden of Earthly Delights

The Garden of Eden is depicted in *The Garden of Earthly Delights*, painted by Hieronymus Bosch in 1504. Adam and Eve are shown with God, presumably just after their creation. Around them are various African animals.



Citation (Chicago

Style):

Bosch Hieronymus. "The Garden of Earthly Delights." 1490-1500. Grisaille, Oil on oak panel. 185.8cm x 390 cm. Prado, Madrid. Museo del Prado. <https://www.museodelprado.es/en/the-collection/art-work/the-garden-of-ea...>

Read the related article: The Creation and Fall of Man, From Genesis
Usage Statement:

Public Domain

Public Domain is a copyright term that is often used when talking about copyright for creative works. Under U.S. copyright law, individual items that are in the public domain are items that are no longer protected by copyright law. This means that you do not need to request permission to re-use, re-publish or even change a copy of the item. Items enter the public domain under U.S. copyright law for a number of reasons: the original copyright may have expired; the item was created by the U.S. Federal Government or other governmental entity that views the things it creates as in the public domain; the work was never protected by copyright for some other reason related to how it was produced (for example, it was a speech that wasn't written down or recorded); or the work doesn't have enough originality to make it eligible for copyright protection.

Source URL:<https://www.ncpedia.org/media/painting/garden-earthly>