

Rural landscape with mountains, trees, fields, and river (Thai Ramayana Mural)

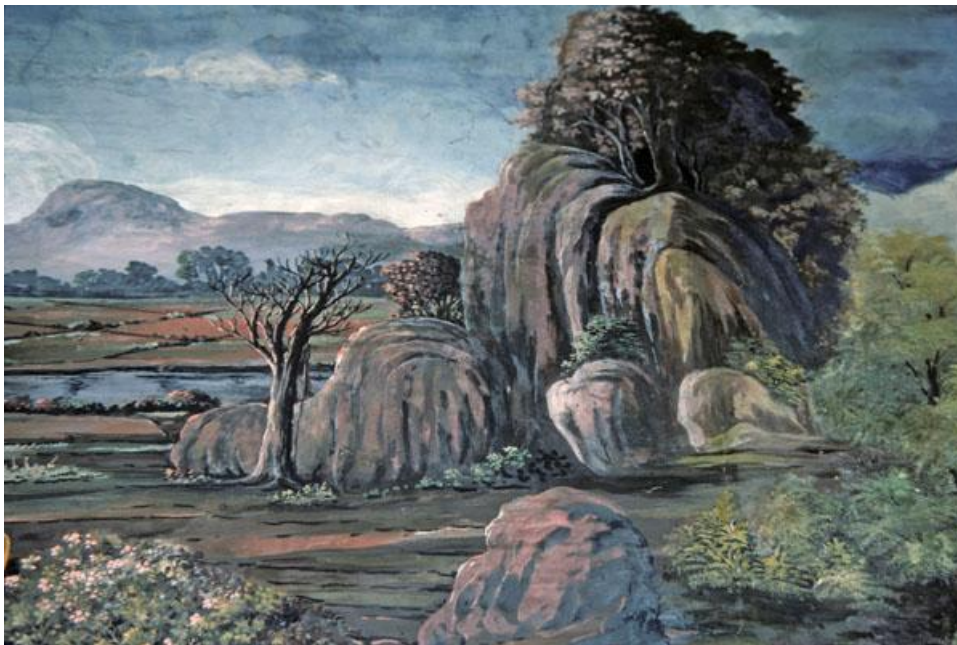
Rural landscape with mountains, trees, fields, and river (Thai Ramayana Mural)

Rural landscape with mountains, trees, fields, and river (Thai Ramayana Mural)

Emerald Buddha Temple mural painting of a landscape with mountains, trees, fields, and river. Boulders and small mountains rest in the center of the scene, while a river, rectangular crop fields, and more mountains are visible in the background. Leafy trees are painted in the right foreground and flowering bushes are at the left.

The calming scene is painted in pastel grey hues of blue, pink, and green. Both landscapes and royal portraits are painted in a Romanticized style in many Thai temple murals.

In the Ramayana, when Rama suspects that Sita's baby is not his, Rama orders his brother Laksman to take Sita to the countryside and execute her.



Usage Statement:

Creative Commons BY-NC-SA

This item has a Creative Commons license for re-use. This Creative Commons BY-NC-SA license means that you may use, remix, tweak, and build upon the work for non-commercial purposes as long as you credit the original creator and as long as you license your new creation using the same license. For more information about [Creative Commons licensing](https://creativecommons.org/licenses/by-nc-sa/4.0/) ^[1] and a link to the license, see full details at <https://creativecommons.org/licenses/by-nc-sa/4.0/> ^[2].

Source URL: <https://www.ncpedia.org/media/painting/rural-landscape>

Links

[1] <https://creativecommons.org/licenses/> [2] <https://creativecommons.org/licenses/by-nc-sa/4.0/>