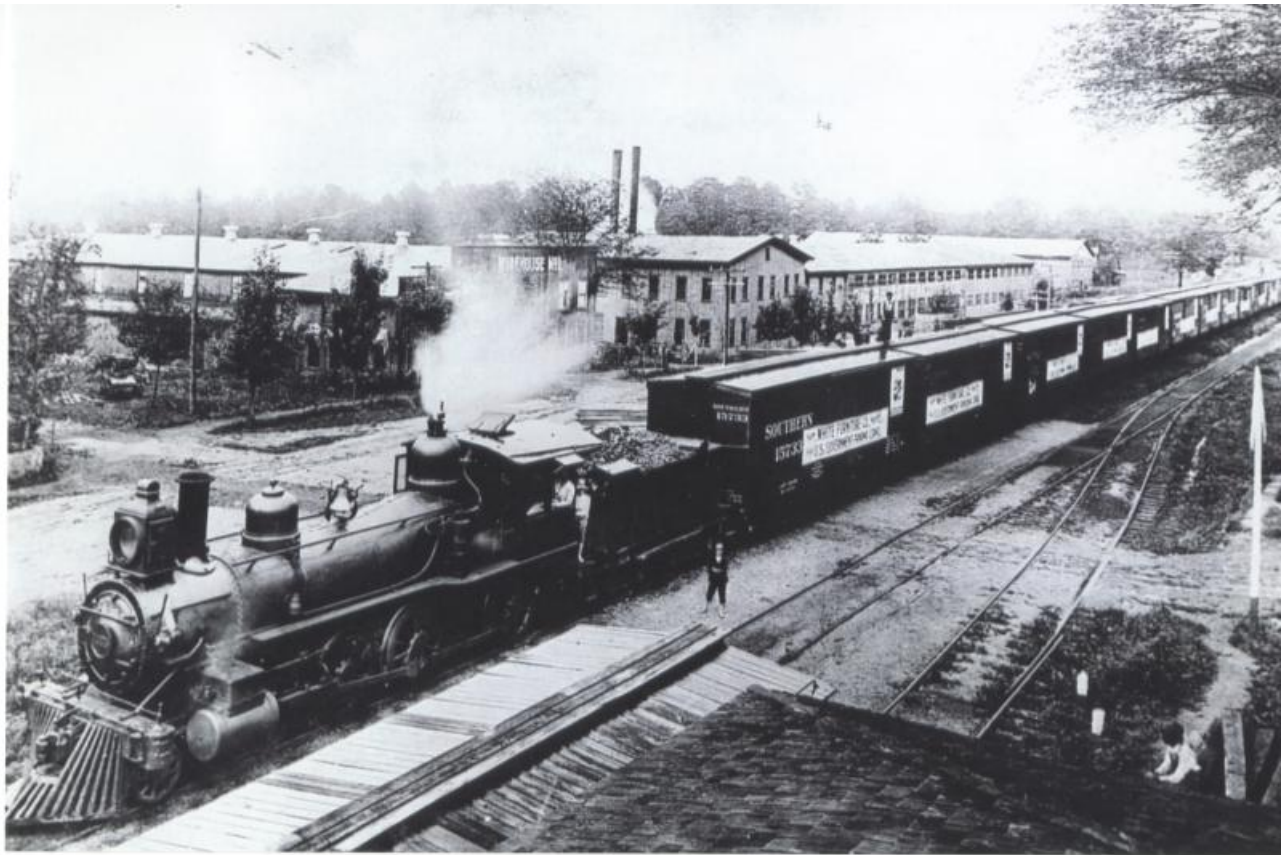


Train Bound for the Panama Canal at the White Furniture Company, Mebane, N.C.

Train Bound for the Panama Canal at the White Furniture Company, Mebane, N.C.

The White Furniture Company began in Mebane, N.C. in 1881 and became one of the most successful industries in North Carolina. This photograph shows a cargo train bound for the Panama Canal around 1906. The train tracks were located next to the factory, shown in the back of the photograph. The company became one of the first factories in the south to operate machinery with electricity, instead of the traditional water power. In 1905 the company became the first furniture manufacturer in the South to win a contract with the U.S. Government -- to sell and ship furniture to officials working on the Panama Canal. This relationship later grew into additional large contracts with the U.S. Army.



Citation (Chicago Style):

"Mebane Panama Canal Train [1906]." Photograph. 1906. Collection of Alamance County Public Libraries. <https://lib.digitalnc.org/record/107859>

Available at:

<https://lib.digitalnc.org/record/107859>

Read the related article: Economic Change: From Traditional Industries to the 21st Century Economy
Usage Statement:

Rights Status Unknown

The exact copyright and related rights status of this item is unknown or undetermined. You can use this item in a way that is permitted by the copyright legislation that applies to your use.